

Bonomi hydraulics



HYDRAULIC COMPONENTS

Industry Leading Solutions





VALPRES

Valpres

Stainless steel, carbon steel and cast-iron process valves. Including butterfly valves, trunnion, cryogenic and control ball valves.



QUAM

Quam

Choke valves, special valves and control systems for Oil & Gas industry.



PENTA S.r.l.

Penta

Metal seated ball valves for critical operating conditions such as high temperatures, up to 700°C, and low temperatures of up to -200°C. Fit for abrasive uses, dangerous applications and engineering for specific services.



GIBSON

Gibson Valves

Butterfly valves, check valves, dumpers, ball valves and customised valves for different industrial applications.



VALBIA

Valbia

Rack and pinion double acting and spring return pneumatic actuators. As well as electric actuators and automated valve packages.



Actuated Valve
Workshop



Emergency Courier
Service Available



UK Stocks of
Valves & Actuators



Next Day Delivery &
Same Day Dispatch



UK Technical Support
Available

Quick Release Couplings

Page
04



High Pressure Ball Valves

Page
24



Actuated High Pressure Ball Valves

Page
28



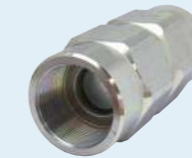
Flow Control Valves

Page
30



Check Valves

Page
32



Hydraulic Accessories

Page
34



Get in Touch

Where to find us

Bonomi (UK) Ltd, The Fluid Power Centre,
Watling Street, Nuneaton, CV11 6BQ

Visit us online

Browse our online catalogue 24/7.
bonomi.co.uk

Chat to us

Email us or use our online chat tool.
hydraulics@bonomi.co.uk

Give us a call

Call us Mon - Fri from 9am to 5pm.
024 7635 4535



FLAT FACE COUPLINGS OVERVIEW

Compliant with ISO16028 our quick release flat face couplings are an essential component in maintaining the integrity and efficiency of your hydraulic systems. Offering high performance, durability, and safety, they have been engineered to provide leak-free connections and minimise fluid loss during disconnections, in harsh working environments.



Applications



Mobile construction equipment



Mining



General industrial usage



Agriculture

Features

- ✓ Heavy duty construction
- ✓ High working pressures and flow rates
- ✓ Designed for minimal spillage
- ✓ Locking sleeve
- ✓ Carbon / stainless options
- ✓ Various seal options
- ✓ Easy clean

Interchangeable with:

All couplings manufactured to ISO 16028 standard.



Carbon Steel Range

Body Sizes
1/4" - 2"

Thread Sizes
1/4" - 2"

Threads

BSP Female

NPT

SAE

Max Working Pressure
250 - 350 Bar

Min Burst Pressure
Up to 1400 Bar connected*

*depending on size



Stainless Steel Range

Body Sizes
1/4" - 2"

Thread Sizes
1/4" - 2"

Threads

BSP

NPT

SAE

Max Working Pressure
100 - 400 Bar

Min Burst Pressure
Up to 1900 Bar connected*

*depending on size



High Pressure Range

Body Sizes
1/8" - 1" 1/4

Thread Sizes
1/8" - 1" 1/4
M12 - M36

Threads

BSP

NPT

SAE

Metric male and female,
bulkhead light and heavy

*depending on size



Connection Under Pressure Range

Body Sizes
1/4" - 2"

Max Working Pressure
250 - 400 Bar

Thread Sizes
1/4" - 2"

Min Burst Pressure
Up to 1900 Bar connected*

Threads

BSP

NPT

SAE

Metric

*depending on size



Ultra High Pressure Range

Body Sizes
1/4" - 3/8"

Max Working Pressure
700 Bar

Thread Sizes
1/4" - 3/4"

Min Burst Pressure
Up to 2300 Bar connected*

Threads

BSP

NPT

SAE

*depending on size

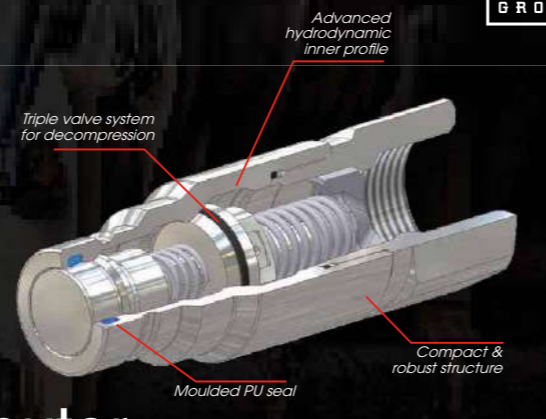
MANULI MQS-FP

Q.SAFE CONNECT UNDER PRESSURE FLAT FACE COUPLINGS IN STOCK AT BONOMI UK



UK & Ireland Exclusive Distributor

024 7635 4535 | hydraulics@bonomi.co.uk | bonomi.co.uk

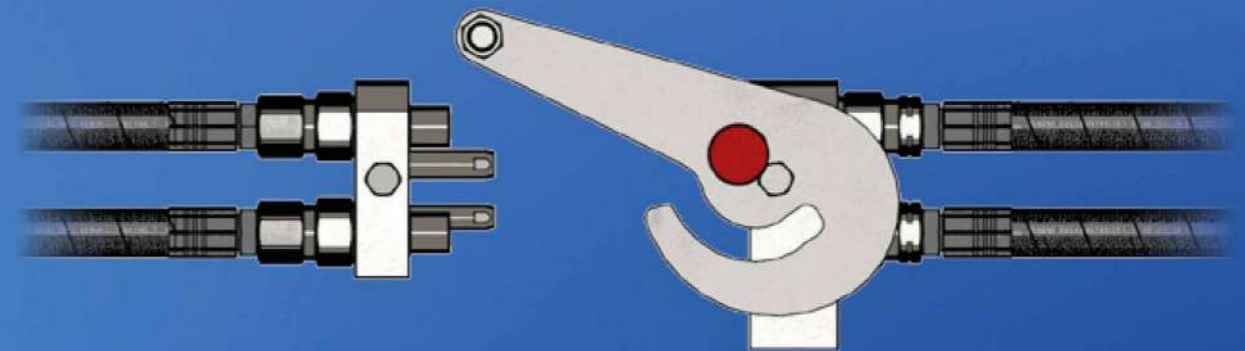


DISCOVER OUR COMPLETE RANGE OF MULTI COUPLINGS

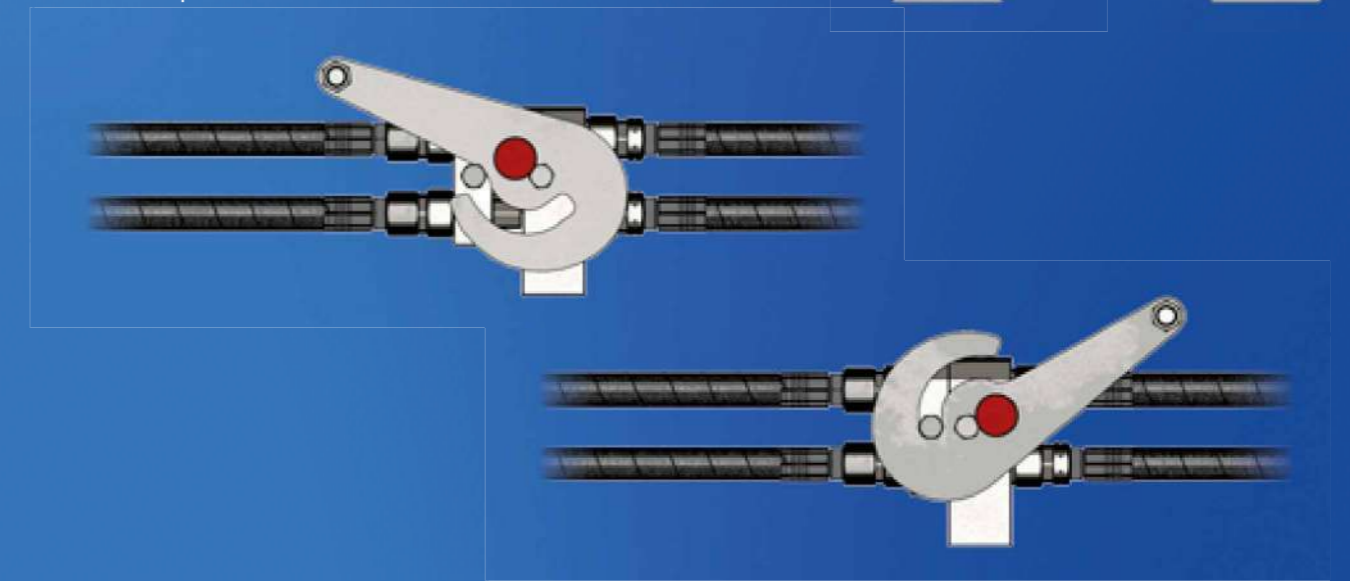
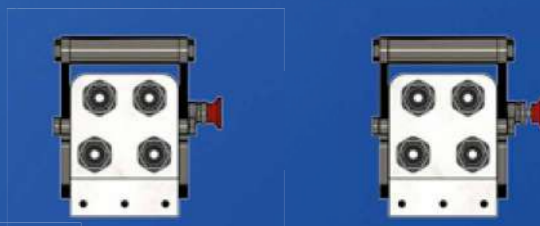


Our compact solutions enable closer arrangement of hoses, offering easy access without adding significant weight. Experience industry leading performance with our couplings, featuring reduced pressure drops and virtually zero oil spillage during connection and disconnection processes.

Designed to reduce connection times, our multi connectors and couplings offer low risk of incorrect connections between mobile and static blocks ensuring smooth and reliable operation.



Tailored for demanding environments, our high pressure couplings can be connected even under residual pressure and are exceptionally easy to maintain. With a straightforward cleaning process, our couplings promote longer life and consistent performance.



024 7635 4535 | hydraulics@bonomi.co.uk | bonomi.co.uk

For a streamlined operation that promises efficiency, safety, and reliability choose Bonomi Hydraulics.



ISO A NORM COUPLINGS OVERVIEW

Crafted for superior performance, our ISO 7241 - 1A compliant couplings ensure effortless and secure connections, optimising the operational efficiency of your hydraulic equipment. Suitable for use in applications requiring quick and reliable fluid transfer.



Standard Range

Body Sizes
1/4" - 2"

Max Working Pressure
160 - 350 Bar

Thread Sizes
1/4" - 2"

Min Burst Pressure
Up to 1400 Bar*

Threads

BSP

NPT

SAE

*depending on size



Connection Under Pressure Probes

Body Sizes
1/2"

Max Working Pressure
250 Bar

Thread Sizes
1/2" - 3/4"

Min Burst Pressure
1200 Bar connected

Threads

BSP

NPT

SAE

RC



Stainless Steel Range

Body Sizes
1/4" - 2"

Max Working Pressure
60 - 450 Bar

Thread Sizes
1/2" - 2"

Min Burst Pressure
Up to 2900 Bar connected*

Threads

BSP

NPT

*depending on size

Applications



Forestry



Construction



Manufacturing



Agriculture

Features

- ✓ Simple and quick connection
- ✓ Available with poppet valve / ball closing system
- ✓ Full interchangeability
- ✓ Valveless couplings available in zinc or chrome plated (see page 20 for more details)

Interchangeable with:

All couplings manufactured to ISO 7241-1A standard.

ISO B COUPLINGS OVERVIEW

Manufactured for efficient fluid transfer and control our ISO 7241 - 1B couplings feature an automatic shut off mechanism designed to prevent fluid loss and spillage. Crafted from alloys or steel these couplings are built to withstand the high demands of hydraulic systems.



Applications



Chemical industry



Agriculture



Construction



Manufacturing

Features

- ✓ Simple, quick and secure connection
- ✓ Full interchangeability
- ✓ Automatic shut off
- ✓ Ball and sleeve design
- ✓ Male and female connections
- ✓ Various pressure ratings available
- ✓ No unintentional disconnection

Interchangeable with:

All couplings manufactured to ISO 7241-1B standard.

Steel Range



Body Sizes
1/8" - 2"

Thread Sizes
1/8" - 2"

Threads



Max Working Pressure
100 - 500 Bar

Min Burst Pressure
Up to 1500 Bar connected*

*depending on size

Brass Range



Body Sizes
1/8" - 2"

Thread Sizes
1/8" - 2"

Threads



Max Working Pressure
50 - 300 Bar

Min Burst Pressure
Up to 1500 Bar connected*

*depending on size

Stainless Steel Range



Body Sizes
1/8" - 2"

Thread Sizes
1/8" - 2"

Threads



Max Working Pressure
60 - 400 Bar

Min Burst Pressure
Up to 1400 Bar connected*

*depending on size

SCREW COUPLINGS OVERVIEW

Our reliable screw couplings prevent leaks with the use of O-rings, gaskets or tapered threads and sealants. Designed for use with high pressure systems including cylinders and hydraulic tools. Suitable for applications where frequent disconnections are not required.



Applications



Automotive & Aerospace



Plumbing & HVAC



Hydraulics & Pneumatics



Industrial Machinery

Features

- ✓ Connection under pressure (male & female)

Interchangeable with:

Various coupling manufacturers as applicable below:

- STUCCHI VEP
- Gromelle 6000
- ENERPAC
- Faster VV
- Faster VVS



Flat Face

Body Sizes
1/4" - 1" 1/2

Thread Sizes
1/4" - 1" 1/2

Threads

- BSP
- NPT
- SAE

Max Working Pressure
300 - 450 Bar

Min Burst Pressure
Up to 2000 Bar connected*

*depending on size



ISO 14541

Body Sizes
1/4" - 1" 1/4

Thread Sizes
1/4" - 1" 1/2
M14 - M52

Threads

- BSP
- NPT
- SAE

Metric Light & Heavy Male,
Metric Male Bulkhead

Max Working Pressure
300 - 450 Bar

Min Burst Pressure
Up to 2700 Bar connected*

*depending on size



Gromelle Interchange

Body Sizes
1/4" - 2"

Thread Sizes
1/4" - 2"

Threads

- BSP
- NPT

Max Working Pressure
300 - 950 Bar

Min Burst Pressure
Up to 3800 Bar connected*

*depending on size



Enerpac Interchange

Body Sizes
1/4" - 3/8"

Thread Sizes
1/4" - 1/2"

Threads

NPT

Metric

Max Working Pressure
700 Bar

Min Burst Pressure
Up to 2200 Bar



Standard Range

Body Sizes
3/8" - 1"

Thread Sizes
3/8" - 1"

Threads

BSP

NPT

Max Working Pressure
230 - 300 Bar

Min Burst Pressure
Up to 1800 Bar connected*

*depending on size



High Pressure Steel

Body Sizes
3/8" - 2"

Thread Sizes
3/8" - 2"

Threads

BSP

NPT

Max Working Pressure
210 - 650 Bar

Min Burst Pressure
Up to 3000 Bar connected*

*depending on size



Bonomi hydraulics

IN STOCK AND AVAILABLE FOR SAME DAY DISPATCH

Quick Release Couplings



ISO A Norm Couplings

Ensure effortless and secure connections with our ISO 7241 - 1A compliant couplings.



Flat Face Couplings

Our quick release flat face couplings are an essential component in maintaining hydraulic systems.

High Pressure Ball Valves



2-Way

Designed to withstand rigorous operating conditions, with minimal pressure drop.



3-Way

Designed to control the flow direction in complex piping systems, managing fluids under high pressure.



Multi-way

Contact us for more information on our Multi-way valves.



Actuated

Designed to combine the robustness of high pressure ball valves with the precision of automated actuation.



024 7635 4535



hydraulics@bonomi.co.uk



bonomi.co.uk

AGRICULTURAL COUPLINGS OVERVIEW

Maintain proper functioning of hydraulic components with our range of agricultural couplings. Designed to connect and disconnect hydraulic lines efficiently when changing or switching equipment.



Applications



Agricultural machinery & equipment



Agricultural hydraulic systems



Farming Equipment



Automotive

Features

- ✓ Automatic release in case of accidental pull avoiding damage to hydraulic circuit
- ✓ Agricultural hydraulic brake systems – ISO 5676 compliant
- ✓ Agricultural hydraulic accessories – connection under-pressure male or female side
- ✓ Lift systems on tipper lorries

Interchangeable with:

Various coupling manufacturers as applicable

Faster CVE

Push Pull Standard Range



Body Sizes
1/2"

Max Working Pressure
250 Bar

Thread Sizes
1/2" - 3/4"

Min Burst Pressure
1200 Bar connected

Threads

BSP

Push Pull Premier Range



Body Sizes
1/4" - 1"

Max Working Pressure
225 - 350 Bar

Thread Sizes
1/4" - 1" / M14 - M52

Min Burst Pressure
Up to 1400 Bar connected*

Threads

BSP

NPT

SAE

Metric light and heavy male, metric male bulkhead

*depending on size

Standard Range Trailer Brake



Body Sizes
1/2"

Max Working Pressure
150 Bar

Thread Sizes
3/8" - 3/4"
M18 - M22

Min Burst Pressure
930 Bar connected

Threads

BSP

SAE

Metric




YOUR PREMIER SOURCE FOR FLUID POWER SOLUTIONS

We've got all your fluid power needs covered



Connection Under Pressure Range



Body Sizes
1/2"

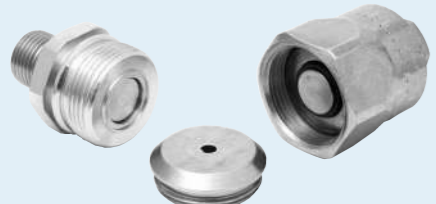
Thread Sizes
1/2"

Threads
BSP Metric

Max Working Pressure
300 Bar

Min Burst Pressure
1250 Bar connected

Tractor Screw Type Flat Face



Body Sizes
1/2"


Thread Sizes
3/8" - 1/2" / M18 - M22
3/4" - 7/8" UNF

Threads
BSP NPT SAE

Max Working Pressure
200 Bar

Min Burst Pressure
1300 Bar connected

Tipper Couplings



Body Sizes
3/4" & 1"

Thread Sizes
3/4" & 1"

Threads
BSP

Max Working Pressure
300 - 350 Bar

Min Burst Pressure
1325 Bar connected



Airline Accessories

Our airline accessories includes fittings, air preparation and tubing designed for managing and controlling the flow of air within pneumatic systems.



Industrial Solenoid Valves

Our ODE solenoid valves meet the highest standards of quality and environmental management as certified by ISO9001:2015 and ISO14001:2015.



Solenoid DIN Connectors

Our Solenoid DIN Connectors meet the needs of a variety of applications across various market sectors. Compliant with EN 175301-803, our connectors can offer a reliable performance.



Proximity Sensors and Pressure Switches

Our Solenoid DIN Connectors meet the needs of a variety of applications across various market sectors. Compliant with EN 175301-803, our connectors can offer a reliable performance.



Smart Connected Technology

We analyse each individual application, and can create solutions using the best pneumatic, electric or proportional technology available.



Actuated Valve Workshop



Emergency Courier Service Available



UK Stocks of Valves & Actuators



Next Day Delivery & Same Day Dispatch



UK Technical Support Available



VALVELESS COUPLINGS OVERVIEW

Our valveless couplings are designed for the quick and efficient connection and disconnection of hoses, predominantly in the pressure washer market where fluid loss is not a concern. These couplings ensure full flow with no restriction, available in either zinc or chrome plating.



Applications



Chemical Industry



Life Science Industry



Food & Beverage



Agriculture

Features

- ✓ Quick and Efficient Connection and Disconnection
- ✓ Full Flow with No Restriction

Interchangeable with:

DIN standard – 1/2" interchangeable with ISO A

Nordic interchange

Tema T Series / CEJN 525



ISO A Norm

Body Sizes
1/4" - 1" 1/4

Thread Sizes
1/4" - 1" 1/4

Threads

- BSP
- NPT
- RC

Max Working Pressure
250 - 350 Bar

Min Burst Pressure
Up to 1400 Bar connected*

*depending on size



DIN Standard

Body Sizes
1/4" - 3/8"

Thread Sizes
1/4" - 3/8"

Threads

- BSP

Max Working Pressure
500 - 700 Bar



Tema Valveless

Body Sizes
3/8"

Thread Sizes
3/8"

Threads

- BSP

Max Working Pressure
600 Bar

SPECIALISED COUPLINGS OVERVIEW

Our specialised couplings have been engineered to ensure efficient, secure, and leak-free connections. Whether addressing the harsh environments of mobile hydraulics, ensuring compatibility across varied systems, or providing quick and reliable connections in dynamic settings, these couplings are designed to enhance performance and reliability in complex fluid handling applications.



Applications



Maintenance / Service



Automotive



Construction



Agriculture

Features

- ✓ Connection under residual pressure (not 1/4")

Interchangeable with:

Rectus Tema T Series / CEJN 525
1/2 to ISO 7241-1A - DIN Standard



Tema Interchange

Body Sizes
1/4" - 1" 1/2

Thread Sizes
1/4" - 1" 1/2

Threads

BSP

Max Working Pressure
100 - 400 Bar

Min Burst Pressure
Up to 1800 Bar connected*

*depending on size



DIN Poppet Style

Body Sizes
1/4" - 2"

Thread Sizes
1/4" - 2"

Threads

BSP

NPT

Max Working Pressure
100 - 400 Bar

Min Burst Pressure
Up to 1700 Bar connected*

*depending on size



DIN Ball Style

Body Sizes
1/4" - 1"

Thread Sizes
1/4" - 1"

Threads

BSP

NPT

Max Working Pressure
200 - 300 Bar

Min Burst Pressure
Up to 1200 Bar connected*

*depending on size

2-WAY HIGH PRESSURE BALL VALVES OVERVIEW

Our two-way high pressure ball valves are essential components in various industrial applications where controlling the flow of liquids or gases under high pressure is required. These valves are designed to withstand rigorous operating conditions and offer a reliable means of starting or stopping flow with minimal pressure drop.



Applications



Oil & Gas



Chemical Industry



Water & Drainage



Manufacturing

Features

- ✓ High temperature & corrosion resistance
- ✓ Carbon or stainless steel body options
- ✓ Ball seats polyamide / POM (Delrin) or PTFE
- ✓ 'O' ring seals VITON / NBR

Interchangeable with:

MHA and Gemels

End connection options:

BKH, SKH and RKH are available with the following end connections:

BSP, NPT, Metric male light (DIN 2353L), Metric male heavy (DIN 23535), SAE J514 (Threaded), SAE ISO 6162.2 3000PSI, SAE ISO 6162.2 6000PSI, Full flanged, split flanged & dual flanged

2-WAY HIGH PRESSURE BALL VALVES



Carbon Steel & Zinc Plated - Barstock

Sizes Available
1/8" - 1" 1/2

Max Working Pressure
350 - 500 Bar

Threads

BSP NPT SAE Metric



Carbon Steel - Forged

Thread Sizes
1/4" - 2"

Max Working Pressure
400 - 500 Bar

Threads

BSP NPT SAE Metric



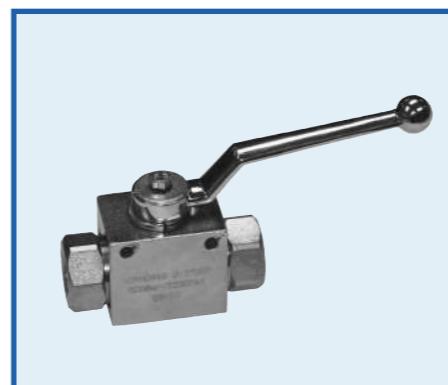
Stainless Steel

Thread Sizes
1/8" - 2"

Max Working Pressure
350 - 400 Bar

Threads

BSP NPT SAE Metric



Panel Mounted

Thread Sizes
1/4" - 1" 1/2

Max Working Pressure
350 - 500 Bar

Threads

BSP NPT

3-WAY HIGH PRESSURE BALL VALVES OVERVIEW

Our three-way high pressure ball valves are designed to control the flow direction in complex piping systems, managing fluids under high pressure. These valves can simultaneously handle multiple streams, redirecting flows between different outlets or combining flows from two inlets to one outlet, depending on their configuration.



Applications



Chemical Processing



Plumbing & HVAC



Oil & Gas



Water Treatment

Features

- ✓ 'L' & 'T' ports available
- ✓ Carbon or stainless steel body options
- ✓ Ball seats polyamide / POM (Delrin) or PTFE
- ✓ 'O' ring seals VITON / NBR

Interchangeable with:

MHA and Gemels

Multi-way valve options also available

Contact us for more information.



Carbon Steel & Zinc Plated - Barstock

Body Sizes
1/8" - 1/2"

Max Working Pressure
350 - 400 Bar

Thread Sizes
1/8" - 1/2"

Threads

BSP

NPT

Metric



Carbon Steel - Forged

Body Sizes
3/4" - 2"

Max Working Pressure
350 - 400 Bar

Thread Sizes
3/4" - 2"

Threads

BSP

NPT

Metric



Stainless Steel

Body Sizes
1/4" - 2"

Max Working Pressure
250 - 400 Bar

Thread Sizes
1/4" - 2"

Threads

BSP

NPT

ACTUATED HIGH PRESSURE BALL VALVES OVERVIEW

Designed for use in various industrial applications these valves combine the robustness of high-pressure ball valves with the precision of automated actuation, facilitating remote or automated control of fluid flow.



Applications



Oil & Gas



Chemical Processing



Power Generation



Water Treatment

Features

- ✓ For the on/off control of the medium by means of pneumatic actuation
- ✓ Double acting or single acting
- ✓ Electric option available - contact us for more information
- ✓ 'L' & 'T' ports available (3 way)

ACTUATED HIGH PRESSURE BALL VALVES



2-Way Actuated Valves

Thread Sizes
3/8" - 1" 1/2

Max Working Pressure
350 - 500 Bar

Threads

BSP

NPT



3-Way Actuated Valves

Thread Sizes
3/8" - 1"

Max Working Pressure
350 - 500 Bar

Threads

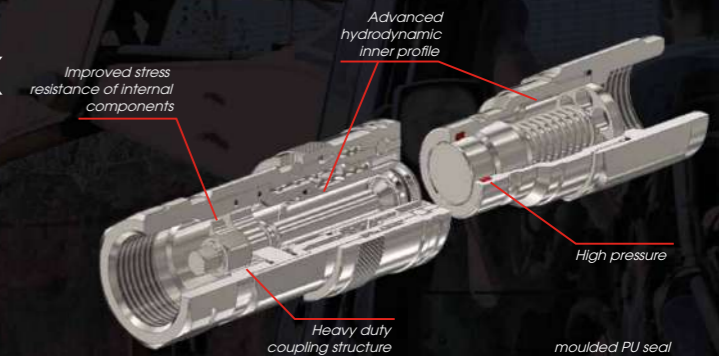
BSP

NPT

MANULI MQS-FH



HIGH PRESSURE Q. SAFE
FLAT FACE COUPLINGS
IN STOCK AT BONOMI UK



UK & Ireland Exclusive Distributor

024 7635 4535

hydraulics@bonomi.co.uk

bonomi.co.uk

FLOW CONTROL VALVES OVERVIEW

Our flow control valves are fundamental components in various mechanical and fluid systems, serving the critical function of regulating the flow rate of liquids or gases through piping networks. These valves adjust the flow rate to specific requirements, ensuring optimal performance and efficiency in systems ranging from simple water piping to complex industrial process controls.



Applications



Water Treatment & Distribution



Chemical Processing



Oil & Gas



Manufacturing

Features

- ✓ Bi-directional (double acting)
- ✓ Uni-directional (single acting reverse flow)
- ✓ Micrometer style aluminium knob or ABS (plastic handwheel)
- ✓ Panel mount with the addition of a lock nut



Brass Range

Thread Sizes
1/8" - 3/4"

Threads

BSP

NPT

(on request)

Max Working Pressure
210 Bar

Max Flow Rate
Up to 80 LPM*

*depending on size



Carbon Steel Range

Thread Sizes
1/8" - 2"

Threads

BSP

NPT

(on request)

Max Working Pressure
350 - 400 Bar*

Max Flow Rate
Up to 350 LPM*

*depending on size



Stainless Steel Range

Thread Sizes
1/4" - 3/4"

Threads

BSP

NPT

(on request)

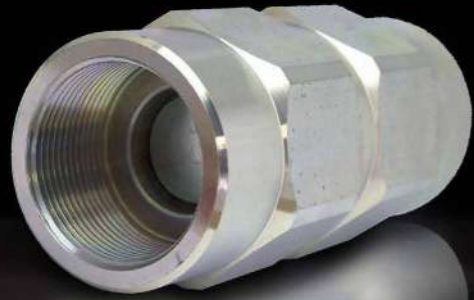
Max Working Pressure
210 Bar

Max Flow Rate
Up to 80 LPM*

*depending on size

CHECK VALVES OVERVIEW

Our check valves are designed to allow fluids to flow in only one direction, preventing reverse flow. They are essential components in many piping systems, ensuring that flow is maintained in the correct direction and protecting equipment from damage caused by backflow.



Applications



Plumbing & HVAC



Oil & Gas



Chemical Processing



Water & Drainage

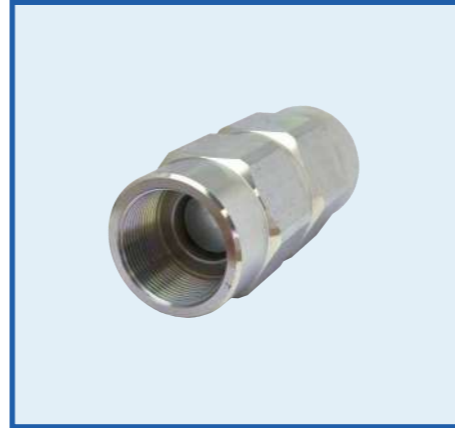
Features

- ✓ Available in carbon and stainless steel
- ✓ Different cracking pressures available

Interchangeable with:

Other NRV manufacturers

Carbon Steel - Poppet & Ball



Thread Sizes
1/8" - 2"

Max Working Pressure
200 - 400 Bar

Threads

BSP NPT
(on request)

Stainless Steel - Poppet & Ball



Thread Sizes
Poppet: 1/8" - 2"
Ball: 1/8" - 1"

Max Working Pressure
200 - 400 Bar

Threads

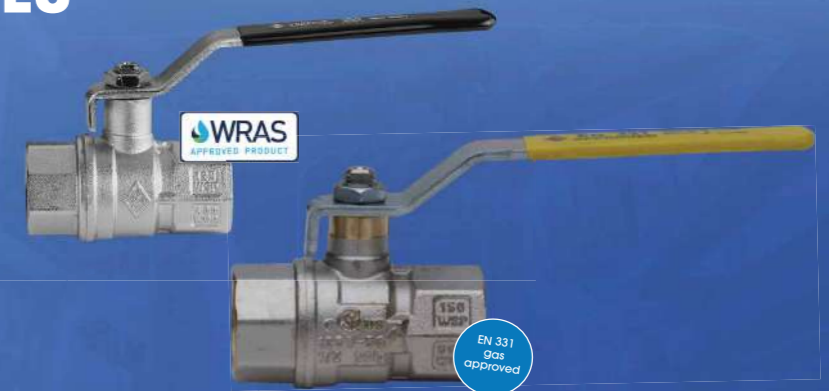
BSP NPT
(on request)

ISOLATE YOUR SYSTEM WITH OUR SAFE AND DURABLE BRASS BALL VALVES



Made in Italy

- ✓ Available in Sizes: 1/4" - 4"
- ✓ Brass nickel-plated body with a hard chrome-plated brass ball
- ✓ Screwed BSP Female End Connections
- ✓ Blue, Red or Green PVC sleeves available on request



024 7635 4535 sales@bonomi.co.uk bonomi.co.uk



Contact us today to learn more about our ball valves and how they can benefit your projects!

ACCESSORIES OVERVIEW

At Bonomi UK, we offer a selection of high quality hydraulic accessories designed to meet the diverse needs of your applications.



Applications



Manufacturing



Maintenance and Repairs



Construction



Automotive

Features

- ✓ Manufactured from high quality materials
- ✓ Suitable for use in hydraulic systems

Dust Caps & Plugs



Protect your hydraulic systems from contaminants with our durable dust caps and plugs. Engineered for perfect fit and superior protection, these accessories ensure your equipment remains clean and operational, minimising maintenance needs and downtime.

Pressure Gauges



Monitor your hydraulic system's performance accurately with our precision pressure gauges. Available in various sizes and configurations, these gauges provide clear, reliable readings to help you maintain optimal pressure levels and ensure system safety.

Test Points



Simplify system diagnostics with our easy to install test points. Designed for seamless integration into your hydraulic systems, these test points allow for quick pressure and temperature measurements without system shutdown, facilitating continuous operation and efficiency.

Adapters



Ensure compatibility and flexibility within your hydraulic systems with our comprehensive range of adapters. Made from high-quality materials, our adapters provide secure connections and are available in various sizes and styles to meet your specific requirements.



Bonomi
hydraulics

Bonomi (UK) Ltd

The Fluid Power Centre, Watling Street, Nuneaton, Warwickshire, CV11 6BQ

+44 (0)24 7635 4535

hydraulics@bonomi.co.uk

www.bonomi.co.uk

© All rights reserved

To ensure the quality and technical standards are at the highest level, the manufacturer reserves the right to alter the specifications without notice.
This documentation supersedes and replaces all previous editions.